

# STOW & FOUNTAINHALL

ISSUE 35 - COMMUNITY NEWSLETTER - SPRING 2019

## MUSIC IN AND A MUSIC OF THE GALA WATER SUNDAY 26 MAY 4PM SPRINGTIME EXTRAVAGANZA

Take a moment when you're outside in the joyously unseasonally mild late winter we're having right now - any moment when you have a minute to stop and listen - and, cliché though it is - listen well and you've a chance of hearing the hills of the Gala Water Valley coming alive with the sound of music. That sound of music is also the sound of many months of exploration, accumulation, creation and co-operation blending into a Springtime Extravaganza where five local organisations and one inductee into the Scottish Traditional Music Hall of Fame will come together to create a unique tribute to the musical heritage, past and present, of our particular patch of Scotland.

Well over a year ago Gala Water Singers and Gala Water History and Heritage Association realised that collectively but uncollected, there was knowledge of songs, tunes and poems connected in some way to our bit of the Gala Water but also references in the Archives to some



around 1960s church choir



around 1950s school choir

material which was so old it was new! Excited by this rich potential, GWHHA asked one of their members, Ruth Flavin, who is also a member of GWS and a musician, to take on the project of researching local people's experience of music, building up a picture of musical influences down through the years. Her researches meant connecting with many groups and individuals who also became enthused about bringing together Gala Water's musical heritage. This will culminate in a live concert on Sunday 26 May at 4 pm in Stow Church with a programme much influenced by Ruth's research (tickets on sale early May; look out for posters). The

local community choir and junior choir will sing: songs which have been sung in the past in our locality; songs composed in the Gala Water area, and music inspired by the surrounding countryside and history of the area, some of which have been re-scored for many voices.

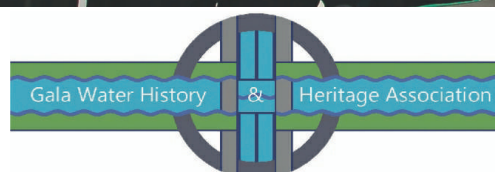
Gala Water's Springtime Extravaganza is further enhanced as renowned singer/ songwriter and local resident Archie Fisher will be running a series of three Songwriting Workshops for over 18s in Fountainhall Village Hall on Saturdays 27 April; 4 and 11 May 2-4 pm (further details from Ruth Flavin t: 01578 730246 or m: 07584 636497). We are delighted that Archie will also be part of the concert and who knows - maybe some of the output from the workshops will have some influence?

Galawater Camera Club will provide a backdrop of photos both old and new from the Gala Water area and Stow Pipe Band will make an appearance and serenade entry to the Concert. Stow Primary School will be linking in with some of their school work and music lessons to support the event. Along with Gala Water Singers Junior Choir their contribution makes this a multigenerational opportunity for the whole community to celebrate music in the valley.



Gala Water Singers at the opening of the Borders Railway 2015

*Gala Water Singers*  
Community Choir of the Gala Water Valley







## STOWED OUT FESTIVAL RETURNS IN 2019 2020

Following another hugely successful Stowed Out Festival in 2018, the committee have decided that for the event to continue and develop it needs to be run on a more professional basis. To enable this transition we will not run a festival this year but will return in 2020.

### CHANGES TO BE IMPLEMENTED:

#### 1. Stowed Out Festival to become a ltd company.

The event's financial success is still very dependent on the weather. The majority of the income comes from ticket sales at the gate and bar income. In the early days any shortfall could have been covered by running a couple of fundraiser events in the hall. Now that the running costs are over £25k it is not acceptable to expose the individual committee members to this level of financial risk. We have been extremely lucky with the weather every year and covered our costs but 2018 was particularly worrying as the weather was so poor in the run up and we had estimated that there could have been a £7k shortfall in the event of poor attendance. Thankfully the sun came out and we had a great weekend.

#### 2. Apply for additional funding (non windfarm funding) or find sponsors

The next festival will have new costs including additional security and a contracted police presence. Some of the work undertaken by the committee would be better completed by events contractors such as building the stage and erecting the lighting truss. This would add further costs.

#### 3. Apply for charitable status

Sound Out is currently a not for profit community group. We feel that what we bring to the area would warrant charitable status and this would also open more funding doors.

### WHAT'S HAPPENING THIS YEAR?

During this year out, we will run a number of "Stowed In" events in the Town Hall.

### PUBLIC FESTIVAL MEETING AND AGM

A public festival discussion and AGM will take place at **7.15 pm sharp in the Cloudhouse Café on Wednesday 6 March** so if you would like to get involved with Sound Out and the running of Stowed Out Festival or just have something to say please come along.

## Stow & Lauder Health

### NEW RECEPTIONIST

Stow & Lauder Health have recruited a new part-time Receptionist, Lara Beavon.

Lara has become part of our friendly local team and hopefully she will stay with us for many years to come.

## CALLING SPINNERS AND POTENTIAL SPINNERS

Recently arrived in Stow from East Lothian, spinner and weaver Angela Fotheringham is interested in teaching the rudiments of spinning to anyone who is interested.

With a cup of coffee and an informal chat, she would like to introduce newcomers to handspinning and welcomes established spinners to join her.

If anyone would like to know more, please contact Angela on 07771 932659



## THE STATION HOUSE

By the time this Newsletter is distributed Stow Community Trust will have had its first Public Meeting this year on Monday 25 February with people being updated on the latest developments with the Station House. Aitken and Turnbull

Architects, Galashiels were invited to come along to share the plans for the building.

Other guests include Graham Aitkin, Chair of Borders Railway Partnership to talk about the work of the Partnership and the range of developments along the Borders line, with Stuart Jeffrey presenting the work that he and Fiona Jeffrey have been doing on mapping walks around Stow. We will also share our plans to make sure that we get best use of the new community room which will be part of the Station House Development. Photographs and updates from the meeting will be available on our website.

The Stow Community Trust website has recently been refreshed, and contains up to date information on the work of the Trust:

*The Station House project, an exciting and ambitious proposal to develop the existing Station House into a bar / bistro with cycle hub and community facilities is currently well underway. The site now features regular project updates, including information on funding, site plans, community engagement and more.*

Check the website, and Facebook group for latest updates.  
[www.stowhub.co.uk](http://www.stowhub.co.uk)  
[www.facebook.com/StowCommunityTrust/](https://www.facebook.com/StowCommunityTrust/)

## GETTING READY FOR SPRING - YOU ARE INVITED

Our community garden in Mill Road is looking rather happy with buds appearing on trees and bushes.

Three sessions are planned for weeding, planting seeds and bulbs and general tidying up. Anyone who can spare an hour to come and help, including children, are welcome. Sessions are on 16 and 17 March from 2 pm and on the 19th from 10 am.

If you have and would like to donate shrubs, bulbs or wildflower seeds then please either leave them outside Andrea Carlino's front door at 7 Mill Court or by the fence at the back of the community garden.



It has been a great start to the New Year. We are taking advantage of the mild weather and spending as much time as possible outside.



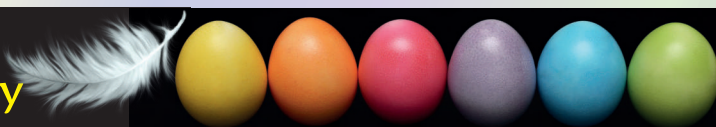
Our resources now include **scooters** for everyone and one of our volunteers will be teaching scooter skills on Mondays!

On Thursdays another volunteer will start teaching the basics of **Highland Dancing** but if you want to learn **hockey** you will need to join us on Tuesdays. **Baking** is done, dusted and eaten at least twice every week.

We are also planning some special events: **Circus skills** on 20 May t.b.c, **pottery, felting and more**. Please check our Facebook page.

The committee is busy planning an **Easter club from 1 to 4 April**. If you are interested please send us an email at [stowkidsclub@hotmail.com](mailto:stowkidsclub@hotmail.com) or contact us on Facebook.

## EASTER SUNDAY STOW BOWLING CLUB OPEN DAY



Come along on EASTER SUNDAY 21 APRIL at 2 PM ONWARDS for the Stow Bowling Club OPEN DAY.

Everyone is welcome to take part and have a go at bowling, all you need is a pair of flat shoes.

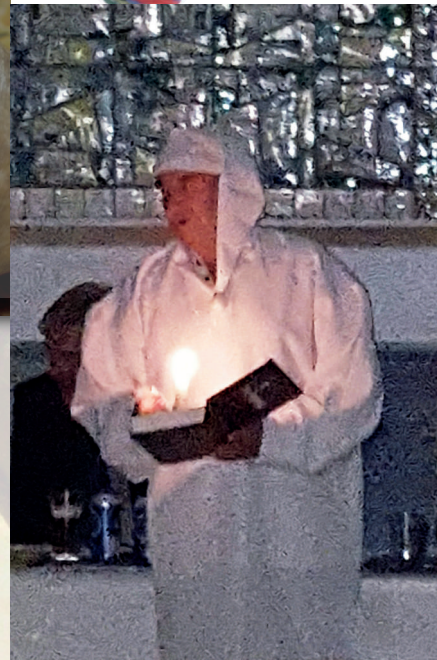
We also have fun obstacles for children and beginners.

There will be someone there to help you and coach you on how to bowl and the rules of the game.

There will be a free BBQ and bar facilities for a fun afternoon.

SO WHY NOT ROLL SOME BOWLS ON EASTER SUNDAY INSTEAD OF EGGS!





Fountainhall Village Hall held its Burns Supper on Saturday 26 January and it was another great success. With thanks to our:

Speakers for evening

- Gordon Keddle - Chairman
- Matthew Purgess - Immortal Memory
- Tom Tinlin - Toast to the Lassies
- Angela Swavrey - Reply from the Lassies
- David Sanderson - Tam o' Shanter

Entertainment from

- Louise Douglas & Stuart Anderson

Cooks for the supper

- Charlotte Hendry
- Tracey Littlejohn
- Alison Kerr
- Kathleen Lofthouse
- Lindsay Kerrigan
- Heather Johnston

Including speakers there were 46 in attendance.

~~~~~

Hall is available for hire from £7.50 an hour. Bars can be arranged if required.  
Call Jim on 07730 353916 for more information.





## WANT ALL TRAINS TO STOP AT STOW? - LOBBY TRANSPORT SCOTLAND ASAP!

At one level it seems churlish to complain about the number of trains calling at Stow, after all with 49 trains each weekday, it's a level of service which many larger places in Scotland would be happy to enjoy. That said, it is very difficult to see the justification for not stopping all trains here when the number of return journeys made (Regulator ORR 2017-18 estimates of station usage) exceeds that forecast in the November 2012 Final Business Case by a factor of six (and in fact exceeds the numbers forecast for both Galashiels and Tweedbank in the same business case by almost 50%). It is also worth pointing out that the number of return journeys made from Shawfair (2017-18) is less than half of the Stow figure (and only a quarter of what was forecast in late 2012) yet Shawfair is provided with the full service.

Of course there are some constraints: tight turn round times at Tweedbank and narrow junction margins at Portobello and the east end of Waverley station, for example, which mean that it might not be totally straightforward to find the extra time necessary. However I am given to understand by a contact at Abellio ScotRail that when the line goes all class 170 (these are the three-coach sets which now form the majority of services) at the December 2019 timetable change, their improved performance should provide sufficient margin to enable all trains to call at Stow.

The decision as to whether this should happen will be made by Transport Scotland (not Abellio ScotRail which only provides - or perhaps that should be 'tries to provide' - the level of service specified by Transport Scotland). *If you would like to see more (ideally all) trains stop at Stow, please let Transport Scotland know your views as soon as possible as timetable planning is done well in advance of the seasonal change date.*

The person to contact at Transport Scotland is Alastair Matheson in the Rail Directorate via email at: [Alastair.Matheson@transport.gov.scot](mailto:Alastair.Matheson@transport.gov.scot) or by post to Alastair Matheson, Services Planning Timetable Manager, Transport Scotland Rail Directorate, Buchanan House, 58 Port Dundas Road, Glasgow G4 0HF.

Bill Jamieson

References:

[https://www.transport.gov.scot/media/10321/ts\\_borders\\_fbc\\_final\\_version\\_issued.pdf](https://www.transport.gov.scot/media/10321/ts_borders_fbc_final_version_issued.pdf) (see Table 9)  
<http://orr.gov.uk/statistics/published-stats/station-usage-estimates>

## COMMUNITY RESILIENCE GROUP

Fountainhall has a community resilience group set up in conjunction with Scottish Borders Council. We are able to respond effectively and can deal with local issues, such as:

- clearing snow from pathways and community facilities
- placing sandbags and domestic floodgates in risk areas to prevent flooding
- delivering supplies during severe weather if you have a suitable vehicle
- provide hot meals and assistance within community centres and village halls
- activate flood signage in their areas
- provide information to us in an emergency

to name a few - we do more.

To become a member of the group please get in touch at: [Fountainhallresilience@hotmail.co.uk](mailto:Fountainhallresilience@hotmail.co.uk)

Further information can be found at: [www.scotborders.gov.uk/info/20008/emergencies\\_and\\_safety/191/](http://www.scotborders.gov.uk/info/20008/emergencies_and_safety/191/)

Stow currently does not have a coordinator. If you are interested in finding out more about the role, please get in touch via the Fountainhall email address above.



**PLANT SALE & coffee morning**  
**Saturday 25 May**  
**10 am - 12 noon**  
**Stow Town Hall**  
 Gala Water Horticultural Society

**MUSIC GROUP**  
 Tuesdays  
 9:30-10:30 am in  
 Stow Town Hall



**BABY AND TODDLERS GROUP**  
 Thursdays  
 9:30-11 am in Stow  
 Town Hall

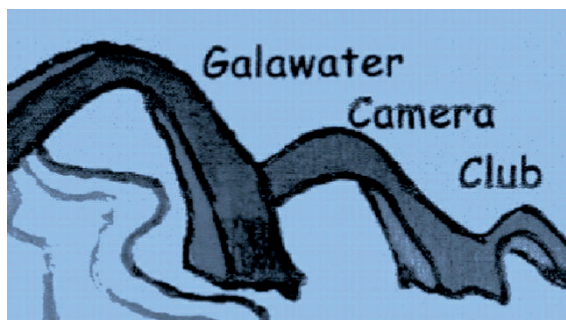
## NEWS

Stow Music and Toddler group have had a lovely busy term. We had a festive end to the year where the children were delighted to meet Santa and create Christmas crafts. Music group's change to a Tuesday has been really popular and it's great to welcome some new faces and singing voices!

We're looking forward to the start of spring with more play, crafts and singing so please do come and join us in the Town Hall!

We run term time throughout the year.  
 For more information contact Kat on 07708 395619.





## GALAWATER CAMERA CLUB

The Club has been running for several years with members meeting on a monthly basis. It continues to be a self - help group of people who want to improve their understanding of their cameras, phones or iPads and digital editing. An annual syllabus is planned which includes different topics / genres which can challenge individuals e.g. still life; portraiture; moving objects as well as landscapes etc.

Members are encouraged to exchange ideas and knowledge to assist those who ask. Several outings per year at least are arranged and can be a challenge as the weather is not always perfect for photography! Occasionally a speaker will be invited to talk about a specific aspect of photography or their experiences. One further development is that other local organisations have asked the members to take photographs for them - the Gala Water History & Heritage Association side of the Spring music extravaganza being our present project as mentioned in this newsletter (see front page). Lastly we hold a couple of exhibitions a year in local cafes, which is an opportunity for the public to see our work.

At present we meet on the last Wednesday of the month 10.30 - 12.30 either in the Cloudhouse or Fountainhall Hall and anyone is welcomed. We realise that the time is not suitable for everyone so if you are interested but evenings would suit please still contact us so that we can consider what can be arranged. Contact numbers - Katy Bisset on 01578 750535 or Dorothy Small on 01578 730550

Thanks to a grant from the Community Council we have been able to purchase our own projector which is available to any community organisation with the Gala Water catchment area to borrow. For further information please contact Fraser Simm on 01578 730297.

## STOW VILLAGE ALLOTMENTS?

Interested in growing your own fruit and vegetables but don't have enough space?

I am trying to get a small group of people together who would like to have (or share) an allotment in the village.

The process to qualify for an allotment is very simple. You have to be a registered Council Tax payer and the cost of renting each allotment is £41 per year. Once enough interest is shown Scottish Borders Council will make land available in the village for a number of allotments. I am happy to co-ordinate expressions of interest and pass these on to SBC.

If you are interested please contact Karen Irvine on 01578 730240 for further information.



## WIND FARM FUNDS APPLICATION DATES 2019

EDF LONGPARK (Foundation Scotland)  
& SSE TODDLBURN  
(combined deadlines and panels)

| DEADLINE   | PANEL MEETING |
|------------|---------------|
| 12 April   | 28 May        |
| 19 July    | 3 September   |
| 18 October | 3 December    |

*there have been no awards since the last update*

Additionally, microgrants of £250 of Windfarm Funding from EDF and SSE are awarded via the Parish of Stow Community Council at their monthly meetings. To apply contact: Jenny Mushlin, Secretary to the Community Council, 18 Fleming Place, Fountainhall TD1 2TA - tel: 01578 760297.

Notes  
on  
the  
Wind



## STOW PRIMARY SCHOOL RECYCLING STATION IS OPEN TO ALL IN THE COMMUNITY SO PLEASE SPREAD THE WORD!

You can safely get rid of: plastic toothbrushes; toothpaste; ink cartridges; any kind of household battery; clean milk bottle tops; pens – all types including highlighters etc. and tipp-ex to be recycled.

There is also a book swap and rag bag collection.







## COME & JOIN THE HEATHER HOPPERS...

...a community group for people looking to try some exercise, a bit of running and general fitness.

**BEGINNERS AND ALL LEVELS OF FITNESS WELCOME**



**strength and conditioning class** at Fountainhall Village Hall on Friday evenings 6 - 7pm. Numbers are restricted so it's advisable to book in advance. Cost £3 per session. Contact Anne Weir for further details on 07717 894365.

**outdoor bootcamp and walk/ run session** on Sunday mornings 07.30 am - 08.45 am; meeting at the bottom of Cortleferry Farm, opposite side of the A7 to Fountainhall  
you can join our facebook group where we post additional events, information and get-togethers:  
[www.facebook.com/groups/924660170958008/?ref=share](http://www.facebook.com/groups/924660170958008/?ref=share)

It's been a busy few months again at Stow Primary, there is always something happening. This term P1 responsible for selling the bamboo toothbrushes and shampoo bars, a task they are taking very seriously. Numeracy and literacy skills are being developed as posters are made, orders taken and replied to and change given. Please feel free to contact P1 in the school or order via email [stowpsdisrupters@gmail.com](mailto:stowpsdisrupters@gmail.com) for a speedy response.



some children about textiles and of course Santa came bringing each child a present of a book.

P6/7 are lucky enough to be part of the Washington DC embassy's school adoption program. Scotland's Diplomat, Rory Hedderly came in to explain the program. The children will have a twin school in Washington DC who they will exchange information about Scotland and the USA with.

Christmas produced two shows with P1-P3 putting on 'Prickly Hay', a take on the nativity story. All children were amazing with P1s making a very impressive contribution for their first performance. P4- P7 seem to get more and more professional each year and this year's Scrooge was no exception. From the costumes to the singing, the hard work and dedication by all children and staff showed, creating a really memorable evening.

Reducing, recycling and reusing was not forgotten over the festive period, as the children foraged then made and sold reindeer and place settings for school funds. Anyone lucky enough to have bought one would only have been impressed.

Christmas also saw a new member of the school, as Yogi the donkey was adopted from the sanctuary and now holds a special place in the school.

There have been lots of visitors to the school recently. Owen from Bird Garden Scotland came in to talk about bird conservation for world of work; Action for Children came and spoke about young carers; Helen Houston spoke to

Community litter picks are a part of the life of the school now with all children including the nursery involved.

Working with Councillor Aitchison and the community, the schoolchildren are going to develop Mill Lade area in the village. Maps are being studied and children are researching and investigating ideas that will turn the area into a place to encourage biodiversity and enhance outdoor learning.

As always, the school has a busy and thriving recycling centre which all members of the community are encouraged to use.

Depending on when the newsletter reaches you, Friday March 1 will be/ was Race Night in the Town Hall. This popular event, now in its third year is a fundraising evening for the school that the whole community can get involved in and enjoy. Tickets are £5 and must be bought in advance, however those unable to attend could still enter. Horses could be sponsored for an additional £5 which allows you to name a horse and a prize if your horse wins. A cash bar is open on the night. Please contact Jo Broomfield [jo.broomfield@boehringer-ingenelheim.com](mailto:jo.broomfield@boehringer-ingenelheim.com) for more details.



**A**s I was settling down in the Cloudhouse Café with Ina Peacock to interview her for this *Spotlight* piece, a passing customer greeted her warmly, saying "How are you? I haven't seen you for a while. I wondered if you'd left the village?" "Never!" Ina shot back with a smile, and that exchange couldn't be a better introduction to learning more about one of Stow and Fountainhall's longest serving Community Councillors.

Because Ina is here because she fell in love and followed her heart - she and her husband giving up home and jobs to move with their teenage children to Stow in the mid 1980s with no permanent home and no jobs to go to. Sounds dramatic? It's certainly uncommon but in following her heart and ignoring conventional wisdom, Ina has form.

To explain. Ina grew up in a variety of places in Edinburgh where, having just turned 17, she married George, then 19, who she had met only four months before. They were young, hadn't known each other long and initially had to live with relatives as they had no other home.

Many folk were disapproving, but all the doubters were reassured as the couple went on to forge a strong marriage and family, initially in Edinburgh and then in Livingston.

So how did they come to this neck of the woods? The Peacocks had been living in Livingston for nearly a decade when they came to visit friends who had recently moved to Stow. It was the proverbial 'love at first sight' - but with a location! As acting on that strong feeling of 'right person; right time' had brought Ina and George into a successful life together, this strong feeling that Stow was where they should be led them to promptly give up their home and jobs and move with their two (rather reluctant) young teenage children to where they felt their life should now be and where they would thrive. Initially they lived at Torquhan moving two and half years later into Stow itself where they put down sturdy roots. And they both got jobs straight away - once again their trust in their inner knowing of what was right for them paid off.

## spotlight on

INA  
PEACOCK



After a few years commuting to work, the Borders textile connection wrapped its threads round Ina and she went to work at Peri-Lusta in Galashiels but from the early 1990s Ina was able to work, on and off, as well as live, in her beloved Stow. Many will remember the Coffee Pot Café on the ground floor of the corner building behind the Edinburgh bus stop opposite the Auld Kirk. Ina served the locals and passing trade there until it closed around the millennium. It was through wanting to give great service to customers that Ina became involved with the Community Council. "People would come into the cafe and ask me questions about the area and I wanted to be able to answer

them so I used to attend the Community Council meetings as an observer as it's a good way of finding out what's going on". After a couple of years the Community Council sought to benefit even more from Ina's commitment and asked if she would consider becoming a Councillor.

Since 1997/8 Ina has been on the Council (excepting one year off four years ago when sadly her husband died) with a specific interest in roads and signage. She sees her role as listening carefully, representing

people and working with others to enhance the Parish and she takes a keen interest in where Windfarm Funds are spent. She'd love to see the public - us - getting more involved in the work done by the Council (Meetings first Monday of the month 7.30pm; mainly Stow Town Hall, twice a year at Fountainhall Hall; all meetings open to the public; minutes on Townfoot and Fountainhall Notice Boards and Community Website). However Ina's service to Stow and Fountainhall doesn't stop with the Community Council. She is a member of the Pensioners Society Committee and those with long memories will remember her as the volunteer photographer of Stow Sports Week whose prints were available via the Post Office for anyone who wanted a memento to collect.

Ina's love affair with Stow over three and a half decades is still going strong and it's a benefit to us all that there is no sign that she intends to give any less commitment of her time and care to the relationship than she has done in the past. Thank goodness! There's no doubt that we're all the better for it.

### NEXT NEWSLETTER SUMMER 2019 : No. 36

COPY DATE      DELIVERED FROM  
13 MAY 19      3 JUNE 19

to: Heather Johnston, Editor  
heather@southcottage.co.uk  
01578 730507

If you are a new business in Stow Parish CC area and would like a mention in the newsletter, please contact the editor for an email reminder of the copy date nearer the time email the editor and ask to be put on the list



### STOWED OUT FESTIVAL PUBLIC DISCUSSION & SOUND OUT AGM

CLOUDHOUSE CAFÉ  
WEDNESDAY 6 MARCH 7.15 PM SHARP

IF YOU HAVE COMMENTS OR QUESTIONS ABOUT  
STOWED OUT FESTIVAL OR WOULD LIKE TO  
GET MORE INVOLVED COME ALONG